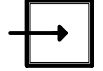
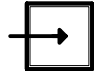
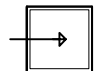
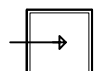
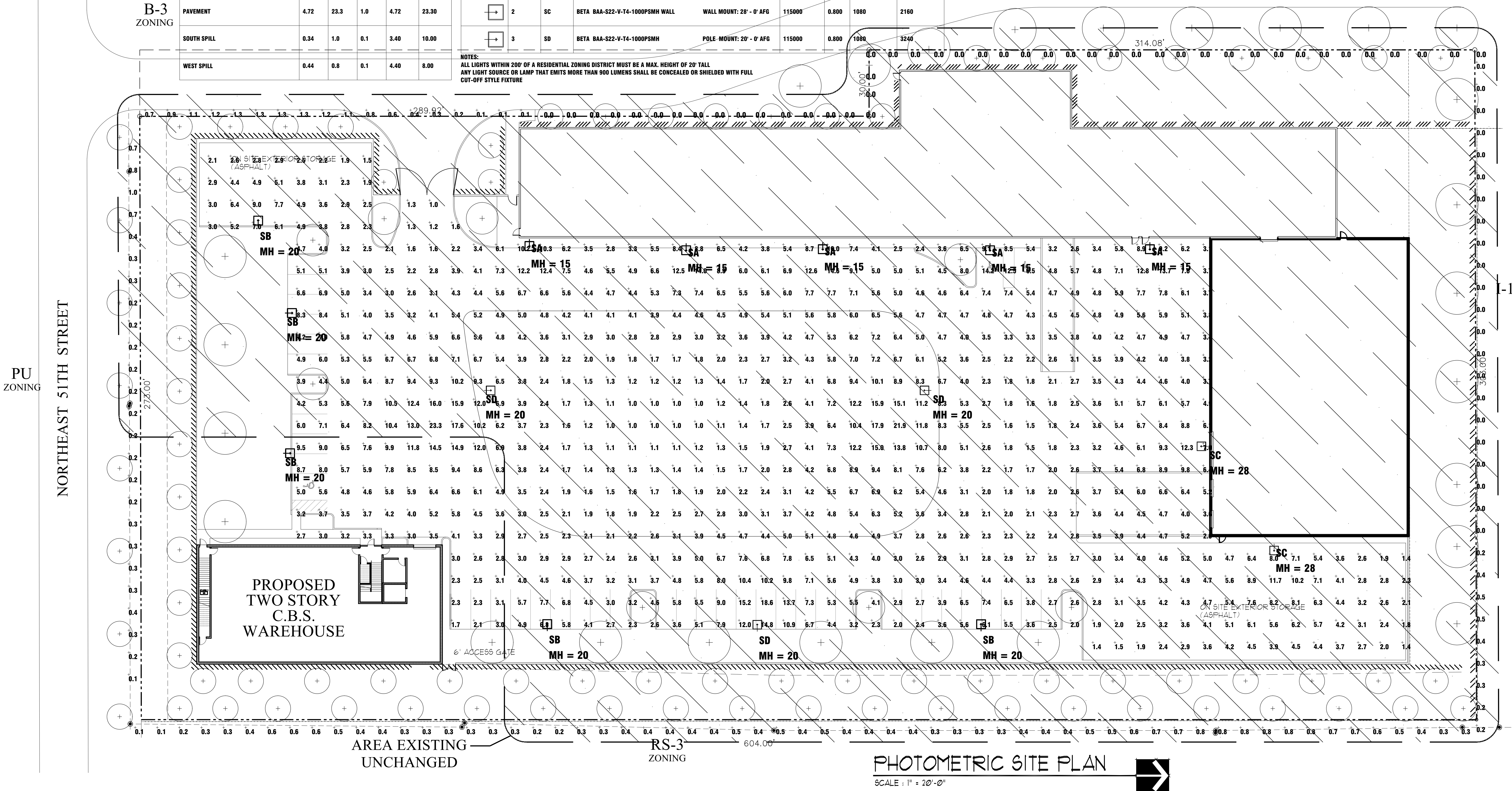


Calculation Summary (FOR REFERENCE ONLY - EXISTING UNCHANGED)					
Project: RIVA MOTOR SPORTS POMPANO BEACH, FL SITE REV 1 12-16-2012					
Label	Avg	Max	Min	Avg/Min	Max/Min
EAST SPILL	0.78	1.3	0.1	7.80	13.00
NORTH SPILL	0.10	0.5	0.0	N.A.	N.A.
PAVEMENT	4.72	23.3	1.0	4.72	23.30
SOUTH SPILL	0.34	1.0	0.1	3.40	10.00
WEST SPILL	0.44	0.8	0.1	4.40	8.00

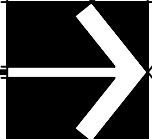
Luminaire Schedule (FOR REFERENCE ONLY - EXISTING UNCHANGED)								
Project: RIVA MOTOR SPORTS POMPANO BEACH, FL SITE REV 1 12-16-2012								
Symbol	Qty	Label	Description	Lumens/Lamp	LLF	Lum. Watts	Total Watts	
	5	SA	BETA BAA-S22-V-T4-400PSMH WALL WALL MOUNT: 20' - 0' AFG	44000	0.850	450	2250	
	6	SB	POLE MOUNT: 20' - 0' AFG	44000	0.850	450	2700	
	2	SC	BETA BAA-S22-V-T4-1000PSMH WALL WALL MOUNT: 28' - 0' AFG	115000	0.800	1080	2160	
	3	SD	BETA BAA-S22-V-T4-1000PSMH POLE MOUNT: 20' - 0' AFG	115000	0.800	1080	3240	

NOTES:  
ALL LIGHTS WITHIN 200' OF A RESIDENTIAL ZONING DISTRICT MUST BE A MAX. HEIGHT OF 20' TALL  
ANY LIGHT SOURCE OR LAMP THAT EMITS MORE THAN 900 LUMENS SHALL BE CONCEALED OR SHIELDED WITH FULL CUT-OFF STYLE FIXTURE



PHOTOMETRIC SITE PLAN

SCALE : 1" = 20'-0"



project name A PROPOSED TWO STORY WAREHOUSE FOR: <b>RIVA MOTORSPORTS</b> 5100 NE 13 WAY POMPANO BEACH, FLORIDA 33064	revision dates REV 1: 6-15-21 REV 2: 8-30-21 REV 3: 10-11-21	consultant seal  Pete Meador Ebersole AA26001446	ARCHITECTURE LANDSCAPE ARCHITECTURE LAND PLANNING INTERIOR DESIGN GOVERNMENTAL PROCESSING AA26001446 <b>ARCHITECTURAL ALLIANCE</b> 612 S.W. 4TH AVENUE FORT LAUDERDALE, FLORIDA 33315 TEL : (954) 764-8858 FAX : (954) 764-0731 E-MAIL : architecture@archall.net	project number 21112	sheet description PHOTOMETRIC SITE PLAN	drawing number <b>PH-1</b>
				release date 6-16-21		

**AAC**  
P221-12000024  
12/07/21